

New  
Version 5

Geocoder



(X) 5,8194

(Y) 45,2223

710 rue  
Aristide Berge

*GEOCODING ADDRESSES  
MADE EASY, ACCURATE AND SMART*

 OPTI-TIME

## LOCALIZE YOUR ADDRESSES WITH CONFIDENCE

### EASY

- > User interface allowing modifying all or part of an address and geocoding it again
- > Correction available directly on a map
- > Numerous input and output formats

### ACCURATE

- > Digital map database are accurate at street number level
- > Accuracy indicators for both the entry address and the geocoded address

### SMART

- > Interpretation and correction of the entry address
- > Processing of inappropriate information in the address field
- > Suggestions sorted by relevance
- > Dictionary
- > Group of characters replacement tool

### THE ESSENTIAL ADD-ON

Geocoder is an essential add-on tool to scheduling and optimizing solutions (like TourSolver) and geomarketing solutions (like ChronoMap).

Geocoder provides the necessary accuracy in order to get the most relevant results in those mission critical solutions within the enterprise. Generally speaking, the geocoding results can be used in any GIS (Geographical Information System) solution.



### INTERNATIONAL

Geocoder works on all countries covered by digital map publishers, Navteq and Tele Atlas. Moreover, Geocoder can manage multilingual addresses in a single file as it often happens in countries like Belgium or Switzerland for instance.

### ADDRESSES STANDARDIZATION

Geocoder not only provides longitude and latitude but also the address as it has been found within the digital map database. The user can then take it to put it in his enterprise information system and therefore improve the quality of the addresses held in his database.

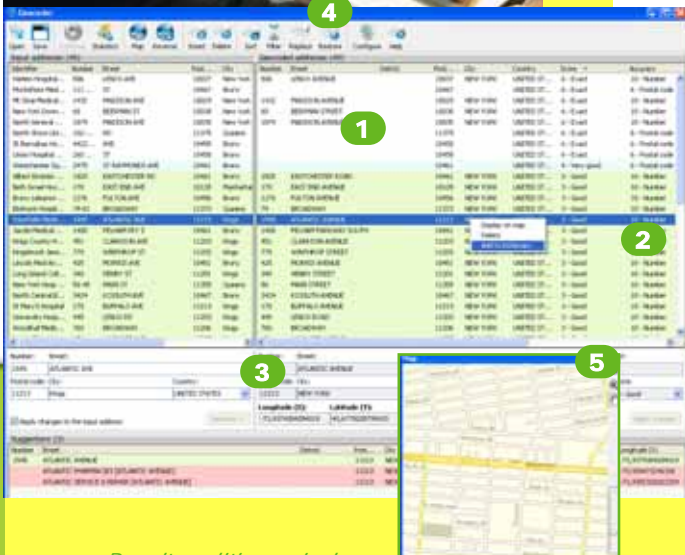
### REVERSE GEOCODING

Geocoder makes it possible to figure out the coordinates of an address but also to find an address from its geographical coordinates.

Perform reverse geocoding	
Longitude (X):	Latitude (Y):
-73,9405377209187	40,8143109083176
<input type="button" value="Reverse"/>	

Number:	Street:	District:	
506	LENOX AVENUE		
Postal code:	City:	Country:	Score:
10037	NEW YORK	UNITED STATES	6 - Exact
Longitude (X):	Latitude (Y):		
-73,9405377209187	40,8143109083176	<input type="button" value="Apply changes"/>	

# A COMPREHENSIVE EDITING AND CORRECTION TOOL



## Results editing window

The Geocoder software displays the entire list of geocoded addresses with the following information:

- > input address,
- > geocoded address,
- > longitude,
- > latitude,
- > and the accuracy and score indicators.



## 1/ ACCURACY AND SCORE

**Accuracy** gives the geocoding accuracy level : number, nearest number, street, block, postal code, city.

**Score** measures the result reliability. It indicates the difference between the entry address and the geocoded address. Most of the time it is due to spelling errors, an incorrect way type, a wrong postal code, etc. The score immediately indicates the reliable results and the results that should be checked out.

## 2/ DICTIONNARY

The dictionary makes it possible to memorize the coordinates of addresses and to automatically assign it next time the same address occurs.

## 3/ SUGGESTION AND MODIFICATION

Each address can be selected in order to be checked and modified if necessary. The Geocoder displays:

- > the input address in separate and editable fields so that it can be modified and geocoded again,
- > the geocoded address, the longitude, the latitude and the indicators,
- > a list of suggestions of close results that can be directly selected by the user.

An address that has been corrected can then be validated and is displayed in bold in the results list.

## 4/ SORTING AND FILTERING

To make results easy to read, Geocoder has numerous display options depending on any field including accuracy and score.

## 5/ CORRECTION DIRECTLY ON THE MAP

The Geocoder software allows directly locating the address on the map. It can be very useful for locations that are known by the user but that might not yet be in the digital map databases: recent housing estates, buildings located in hamlets without street names, ...

## 6/ POINT OF INTEREST GEOCODING

The Geocoder let the user locate and geocode what is frequently called points of interest: shopping centers, airports, castles, industrial park, ... In this case, Geocoder also provides, when available, the address of this point of interest.



## GEOCODE YOUR ADDRESSES IN A FEW CLICKS !

### 1 - Open your addresses file and select the useful fields



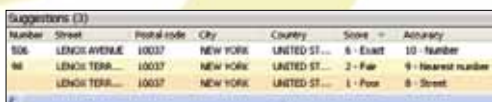
### 2 - Real-time geocoding and statistics



### 3 - Results and indicators



### 4 - Suggestions and corrections



#### SYSTEM REQUIREMENTS :

- > Geocoder works on Microsoft Windows 2000, XP, 2003, and Vista
- Recommended memory size : 1 sGB.

## TECHNICAL SPECIFICATIONS

### FORMATS

- > **Data entry format:** Excel, Geocoder, tabulated text
- > **Fields used for geocoding:** address, additional address, postal code, city, country
- > **Output file format:** Excel, Geocoder, Unicode, tabulated text, html, CSV
- > **Provided information:** latitude, longitude, corrected address, postal code and city from the digital map database, accuracy indicator, score, manual correction information

### ACCURACY LEVEL

- > Number, nearest number, street, district, postal code, city, county, region, state, country

### GEOCODING STATISTICS

- > **Input accuracy:** percentage and number of input addresses including a number, an address, a postal code, a city
- > **Geocoding accuracy:** percentage and number of addresses geocoded at each accuracy level
- > **Detailed statistics:** for each accuracy level of input addresses, percentage and number of geocoded addresses at each accuracy level

### DICTIONNARY

- > The dictionary allows to keep the coordinates of addresses to speed up future geocoding processes.

### SORT, CORRECTION AND MODIFICATION

- > Geocoded addresses editing tool in order to make changes if necessary
- > Suggestions in case of inaccurate or ambiguous addresses
- > Possibility of modifying all or part of any address to geocode it again
- > Possibility of directly locate and geocode an address on a map
- > Multicriteria sort
- > Results selection based on input accuracy
- > Tool to replace a group of characters

### AVAILABLE DIGITAL MAP DATABASE AND COUNTRIES

- > Geocoder works on Navteq and Tele Atlas databases (standard formats).
- Covered territories
  - Europe\*
  - North America\*
  - Latin America\*
  - Asia-Pacific\*

\* in accordance with the list of countries covered by Navteq and Tele Atlas in those areas.